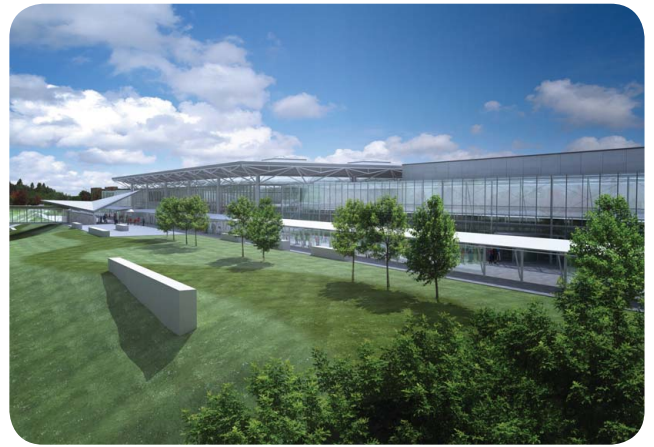


# Mitigation 1 of 2

Where it is necessary Bristol International Airport will make firm commitments with regards to mitigation measures as a consequence of the proposed expansion.

A suite of mitigation measures are identified below that have been considered appropriate and would be implemented as the development proceeds.



## Air Quality

- Development and implementation of a Dust Management Plan during site remediation and preparation, and construction activities;
- Continuous monitoring of oxides of nitrogen and particulate matter at the Airport; and
- Promotion and support of public transport uptake.

## Flora and Fauna

- Retention of the majority of existing biodiversity features such as the hedgerow network and mature trees;
- Seven hectares of farmland comprising grassland and woodland will be subject to nature conservation management, including the creation of a small woodland extension;
- Other enhancement measures to include: planting of new native species rich hedgerows and infilling of existing gaps in hedgerows; planting of a significant number of native trees; provision of bird boxes (including owl boxes) and new potential bat roosts (buildings and bat boxes); and provision of a planted landscaped bund;
- Implementation of a site wide lighting strategy and provision of dark corridors around the perimeter of the airport;
- Implementation of a site wide landscape management plan, Airport Biodiversity Action Plan and Integrated Water Management Strategy and seek entry of components of Bristol International Airport into an agri-environment scheme; and
- Monitoring to measure effectiveness of mitigation and enhancement works.

## Climate Change

- The development will be designed to achieve a high standard of energy efficiency (around 35% better energy efficiency than current Building Regulations) through good design of buildings and infrastructure;
- The development will deliver at least 20% of the predicted additional energy requirements from on site renewable sources, including on site wind power and biomass heat generation;
- The carbon dioxide emissions associated with the airport buildings and infrastructure will fall within the Government's Carbon Reduction Commitment from 2013 which means that their net effect will be capped in line with targets to reduce UK greenhouse gas emissions;
- Carbon offsets will be purchased for any increase in on site direct emissions not included within the Carbon Reduction Commitment; and
- Bristol International Airport will work with airlines, air traffic control and other appropriate organisations to control and reduce emissions contributing to climate change over which it does not have direct control.

## Community

- Working to deliver airport employment to the local community and in particular, South Bristol and Weston-super-Mare, taking an active role with education to raise skills, standards and awareness of career opportunities;
- Playing a responsible role in community affairs, involving the public and community in delivering sustainable airport development;
- Investment in community, educational, social or environmentally focused projects in the local community in support of our sustainability objectives through the Bristol International Airport Community Fund; and
- Promoting the use of local and ethically sourced goods and services, strengthening local and regional supply chains, and boosting the local economy.