

# Living near the airport

Where aircraft fly

Decorative wavy lines in blue and green at the bottom of the slide.



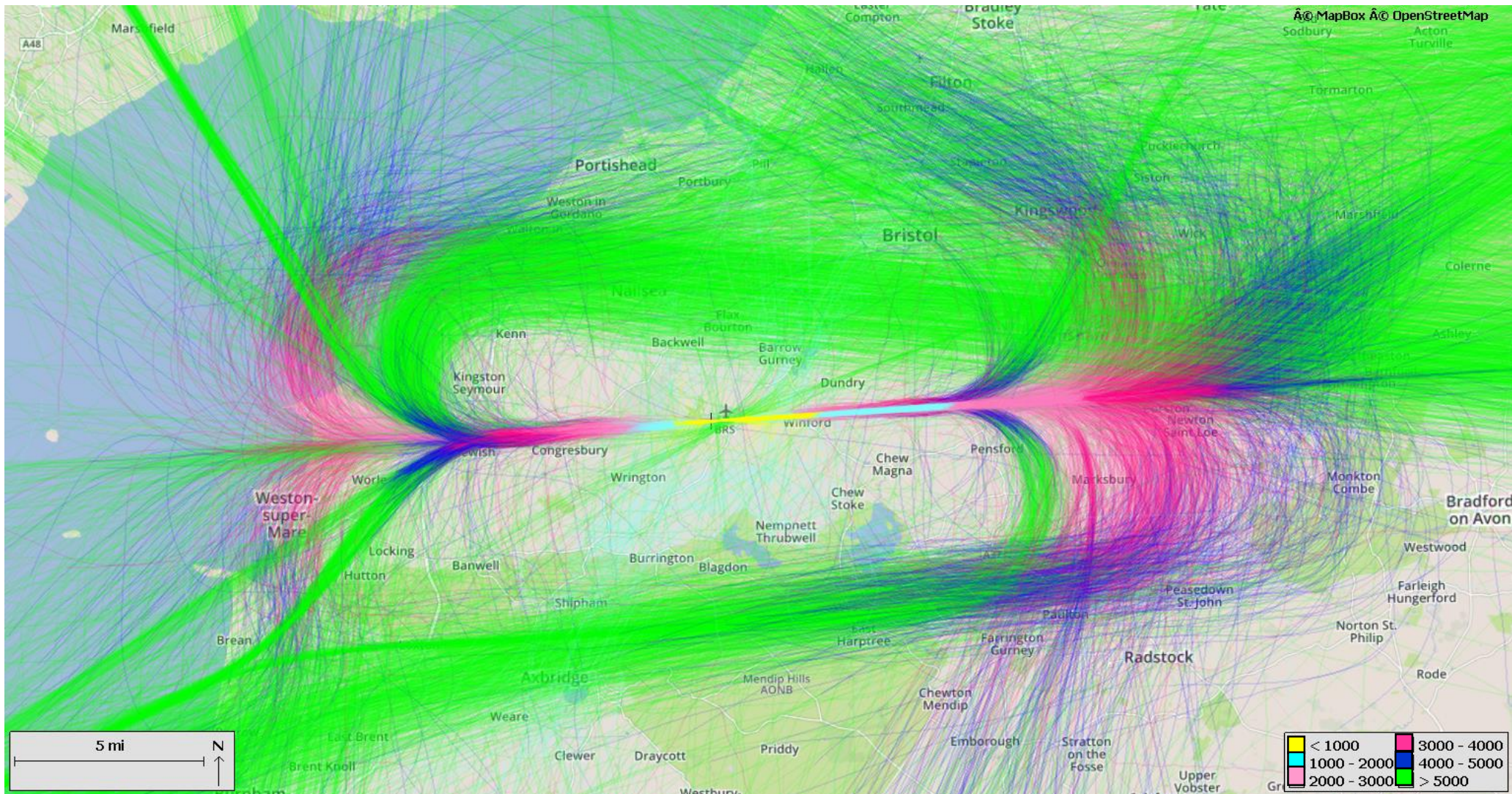
# Keeping track

- We record all of the aircraft movements in and out of Bristol Airport using our Noise and Track-keeping System.
- This includes the radar tracks/paths of all the flights
- The next few pages show information on flight movements which local residents and those potentially looking to move to the area may find useful.
- In showing our movements, we have picked our busiest month of the year (August), to give you an idea of our peak activities.



# Aircraft positions and their heights

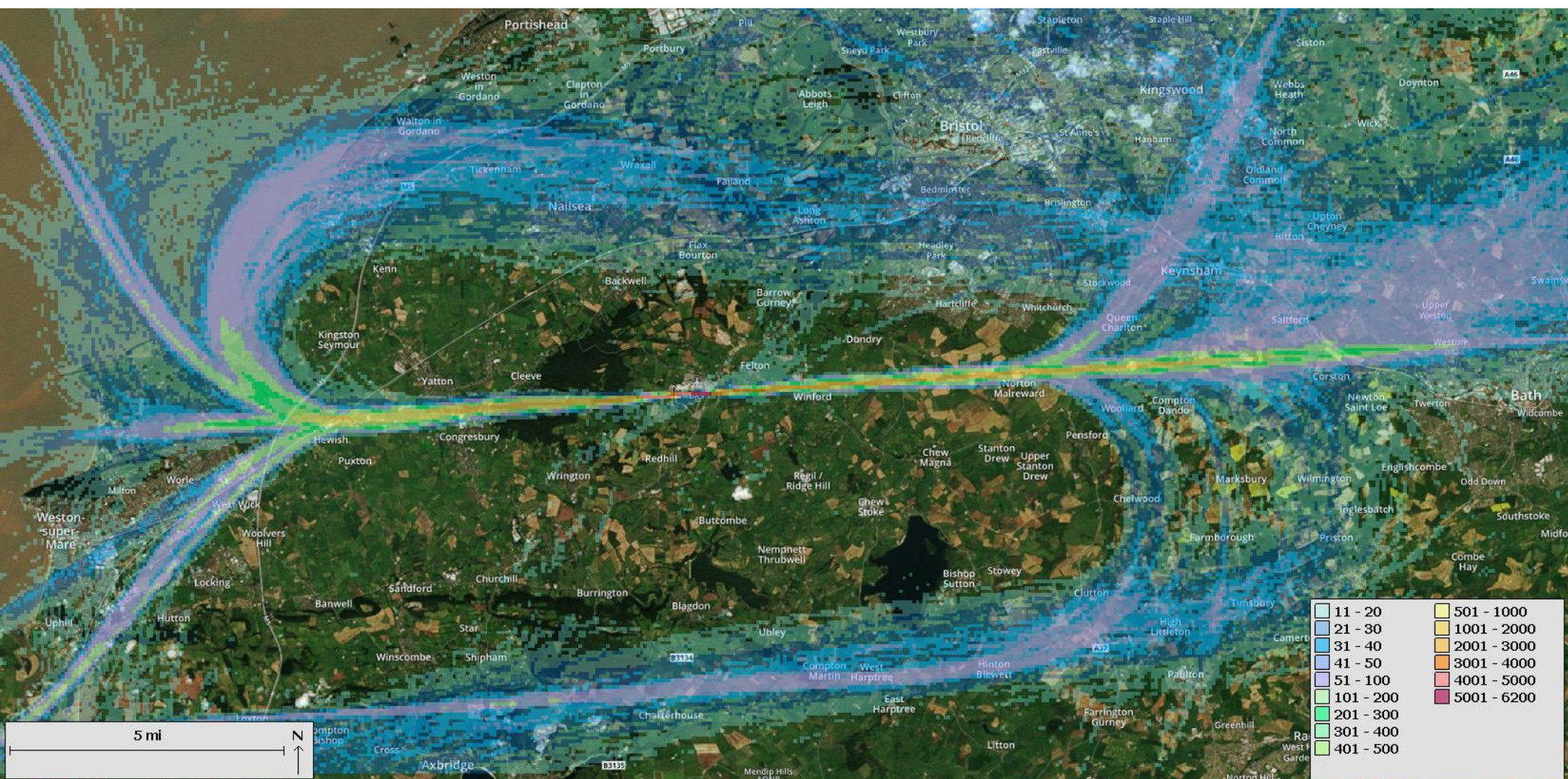
This map shows all the arrivals and departures from Bristol Airport in August 2016. It is colour coded to show the heights that the aircraft were at.



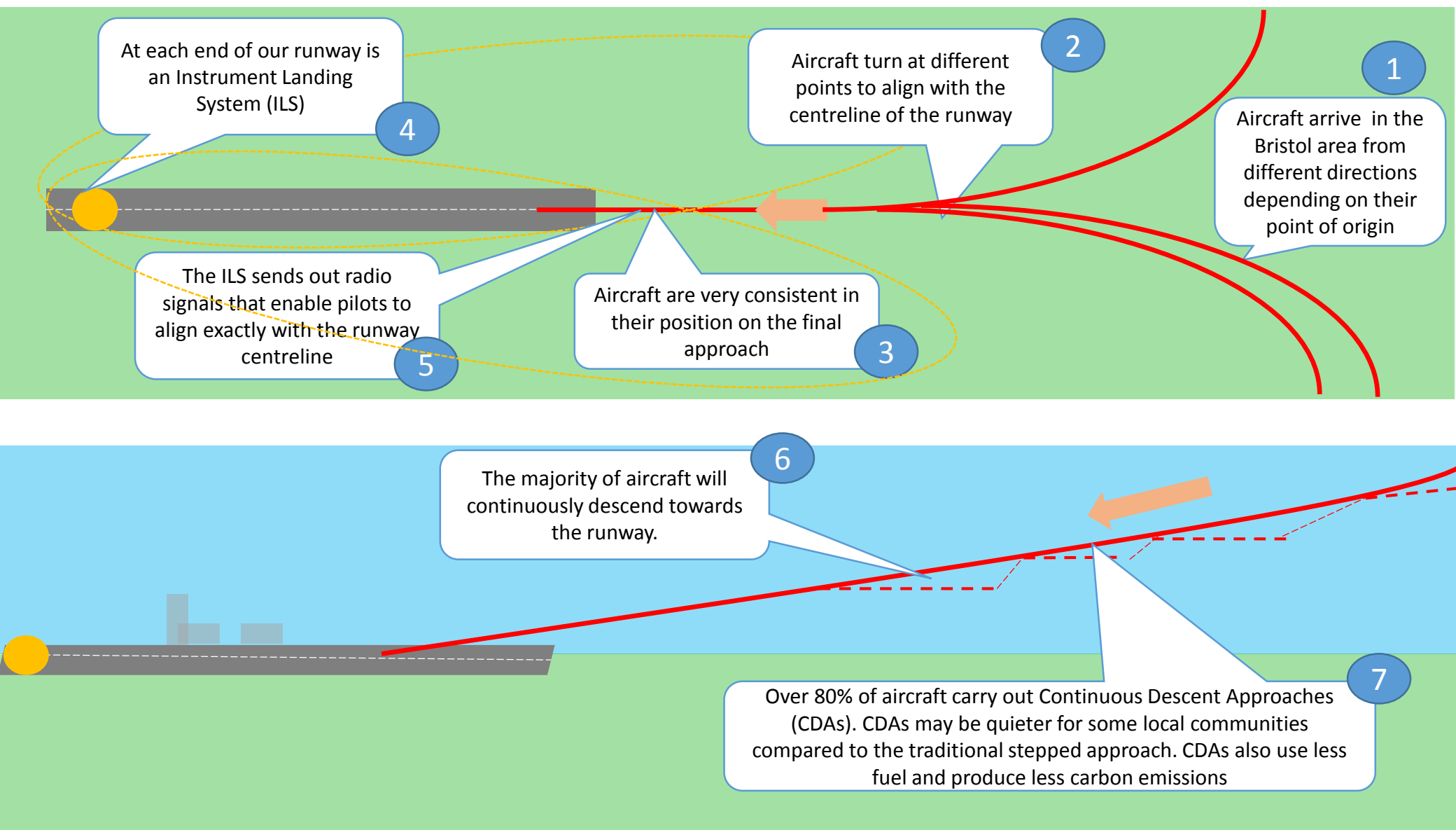


# Aircraft numbers

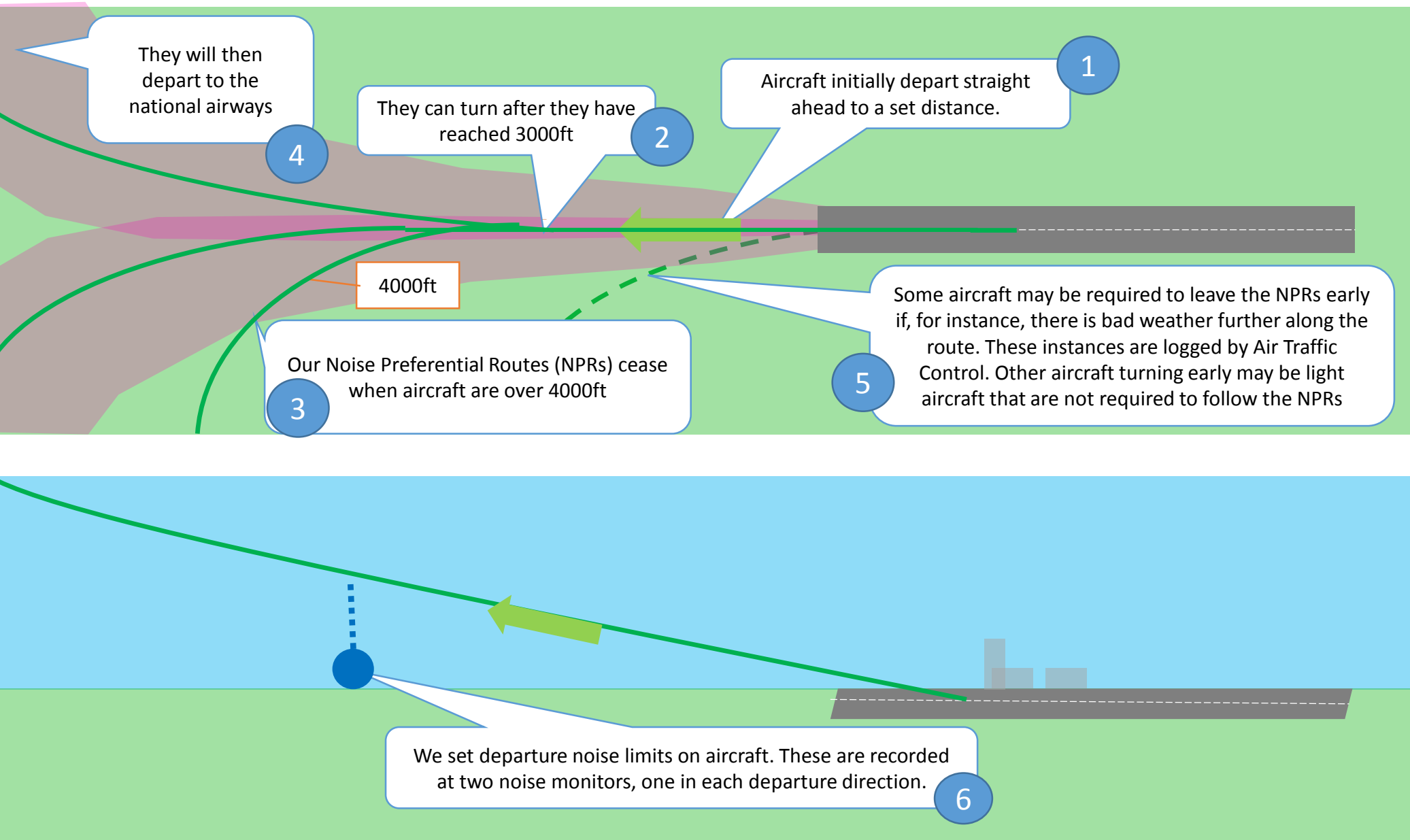
This map shows you the number of flights that flew over an area during August 2016. Areas with less than 10 flights have no colour overlay.



# How aircraft arrive



# How aircraft depart



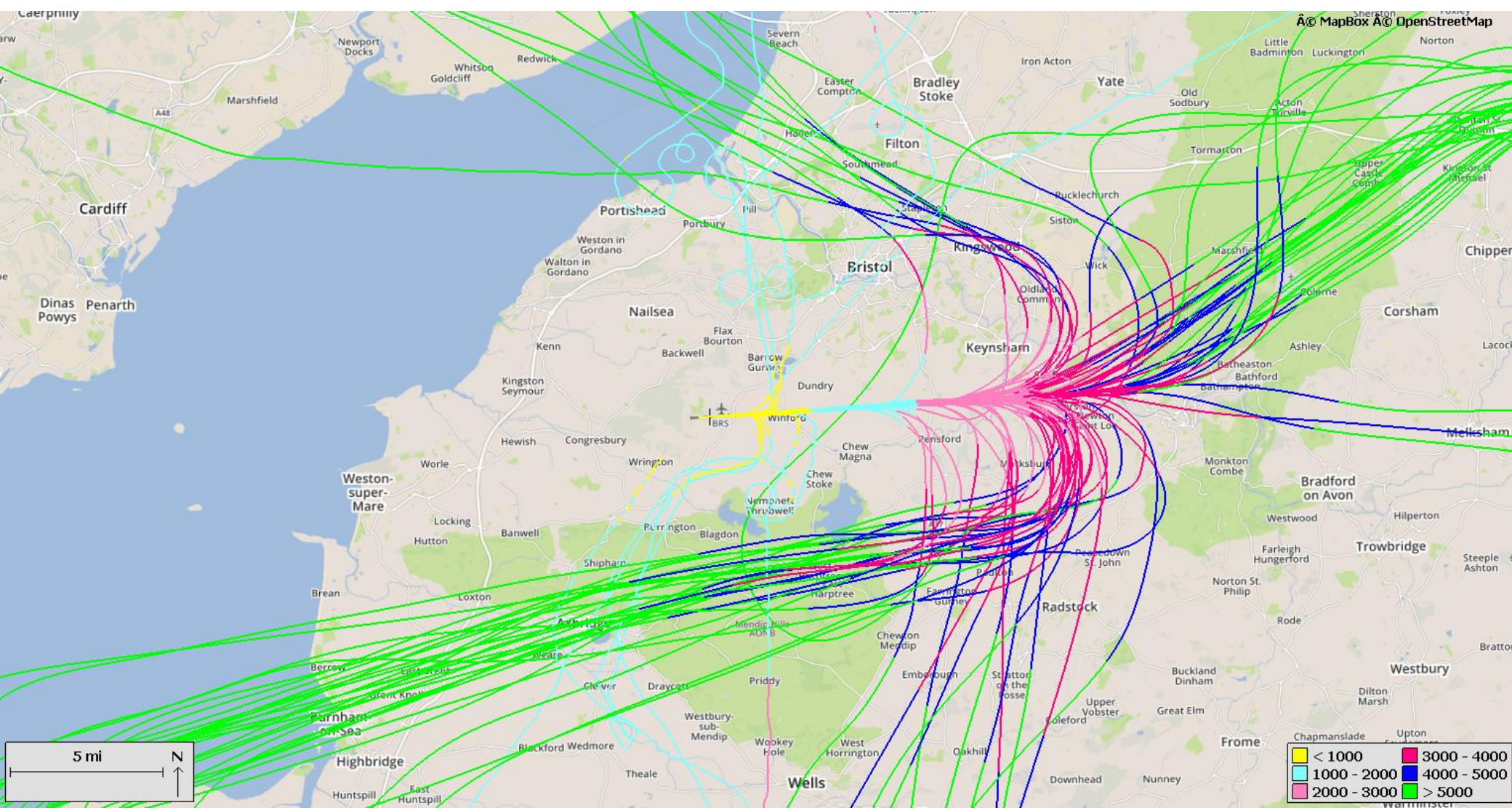




# In which direction do aircraft arrive and depart?

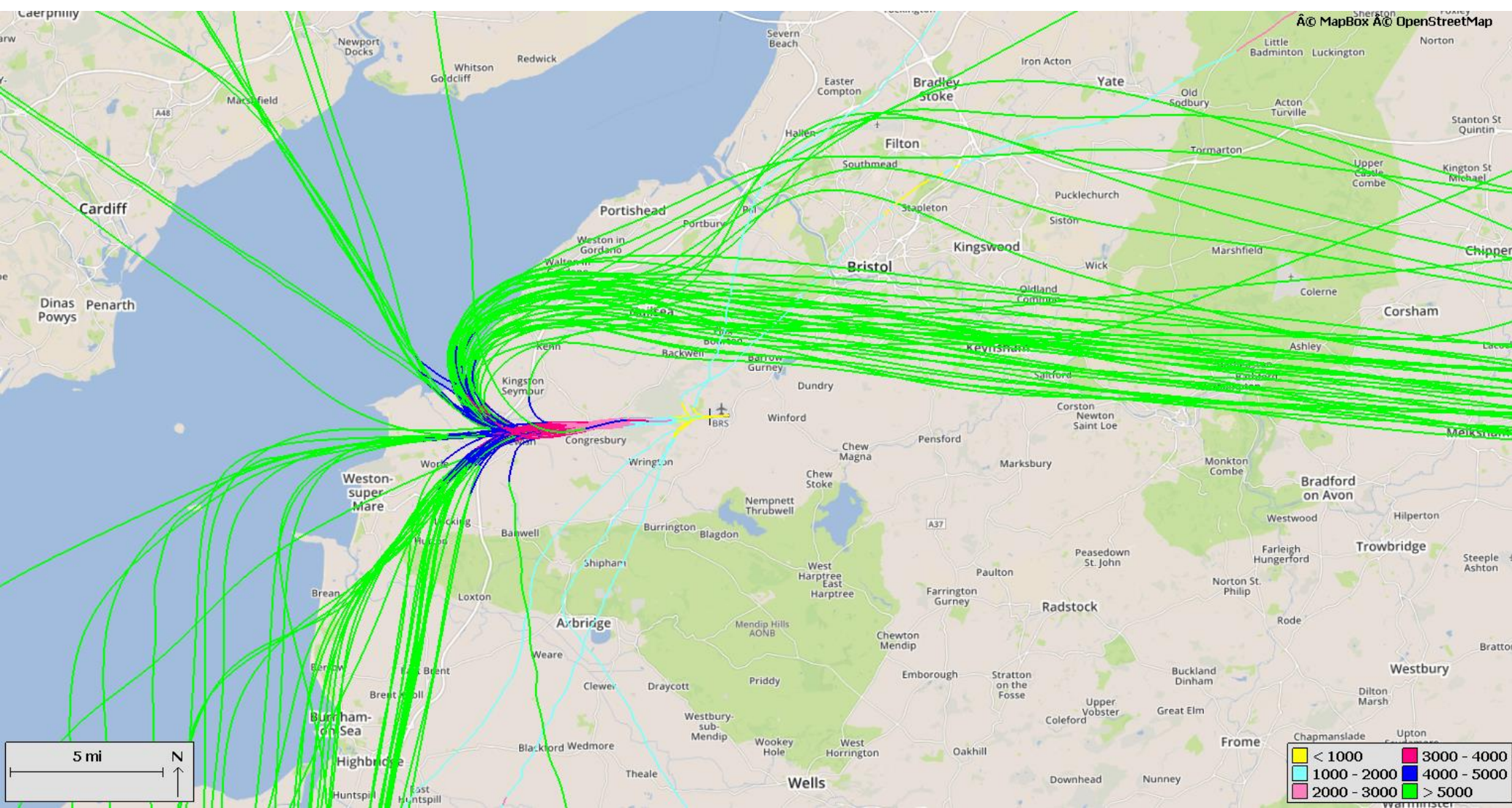
- The direction that our one runway operates in is dependent on weather conditions, particularly wind. Aircraft will be positioned to land and take-off into wind.
- When aircraft are arriving from the east and departing to the west this is **Runway 27**. We use this direction about 70% of the time.
- When aircraft are arriving from the west and departing to the east this is **Runway 09**.
- The runway names come from the compass heading they are travelling towards( 090° or 270°).
- The next few pages show typical movements on a summers day when each runway direction was in use

# Runway 27 Arrivals



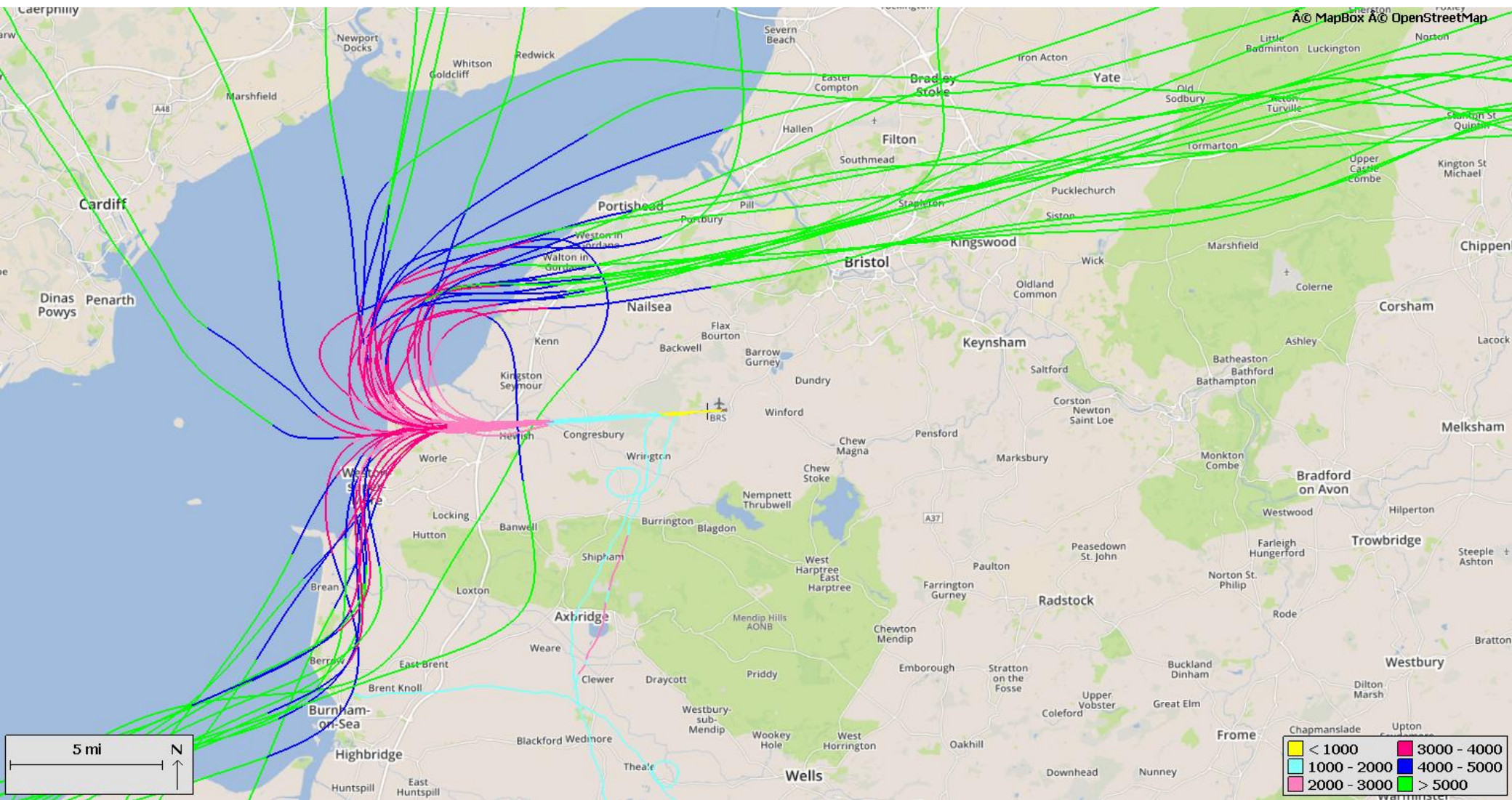


# Runway 27 Departures





# Runway 09 Arrivals





# Runway 09 Departures

