

---

# Staff Travel Guide

Getting to Bristol Airport

June 2026

# Table of Contents

1. [Welcome](#)
2. [My Travel Options](#)
3. [Moving around On-Site](#)
4. [My Travel Benefits](#)
5. [Other Travel Offers](#)

**Bus & Coach**



**Rail**



**Walking & Cycling**



**Car Sharing & Driving**



**Electric Vehicles**



# Welcome

Bristol Airport & Business Partner colleagues can travel for FREE on Airport Flyer Buses\*

**A wide range of travel options & benefits are available to you as an employee of Bristol Airport Limited or an airport business partner.**

As a member of the Bristol Airport team, you have access to a range of travel options and benefits to help make your commute easier, more affordable, and more sustainable.

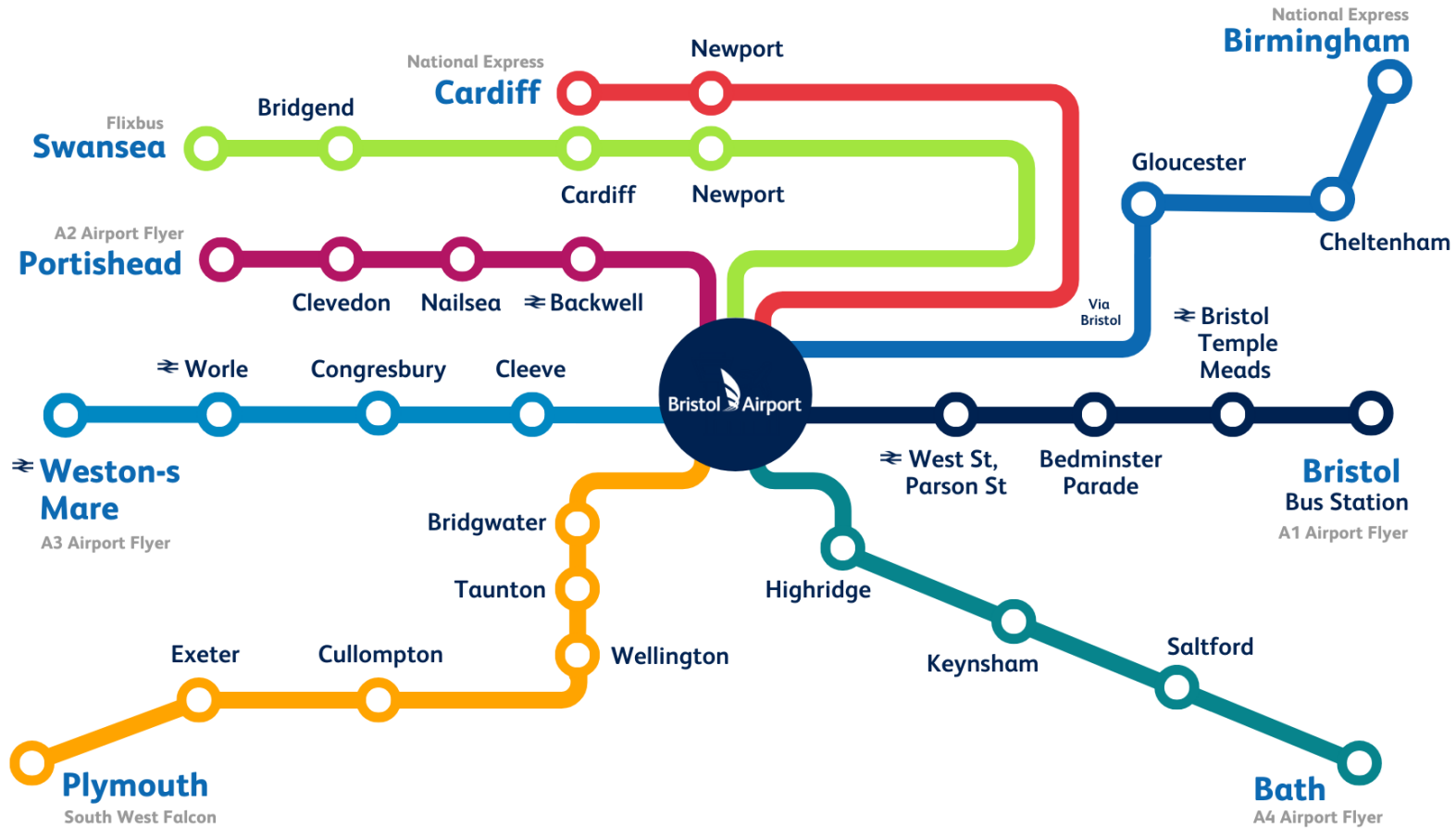
This guide is here to help you explore those options and support you in making informed, eco-friendly travel choices for your journey to and from work.

If you have any questions, feedback, or ideas about colleague travel at Bristol Airport, please get in touch with Rob Henley, Bristol Airport's Transport Planning Manager:  
[robert.henley@bristolairport.com](mailto:robert.henley@bristolairport.com).

\* When travelling on the A1, A3 or A4 to and from the Airport for work purposes.



# Bus & Coach



# Travel by Bus

## A1 Flyer

Bristol Airport to Bristol Bus Station  
via Bristol Temple Meads Station



**7 days a week**  
**7-8 minute frequency** (at peak)

[See timetable](#)

## A2 Flyer

Portishead to Bristol Airport  
via Clevedon, Nailsea and Backwell



**7 days a week**  
**60 minute frequency**

[See timetable](#)

Exclusive  
Discounted Staff  
Travel Fares:  
£3 Single  
£5 Return

## Free Travel on the Airport Flyer

To make your commute as convenient as possible, Bristol Airport colleagues and Business Partners benefit from free bus travel on the **A1, A3 and A4 services**, and discounted travel on A2 services!

To be eligible for free or discounted travel, you must be in possession of either;

- A valid Bristol Airport Security ID Pass or,
- An Airport Flyer Travel Pass (if you've applied but not yet received your airport ID pass) or,
- A Bristol Airport Staff Travel Permit (if you do not require airport ID for your role)

The scheme should not be used for any other reason or when not on shift.



# Travel by Bus

## A3 Flyer

Weston-Super-Mare to Bristol Airport  
via Worle, Congresbury and Cleve



**7 days a week**  
**30 minute frequency** (at peak)

[See timetable](#)

## A4 Flyer

Bath to Bristol Airport  
via Salford, Keynsham and South Bristol



**7 days a week**  
**60 minute frequency**

[See timetable](#)

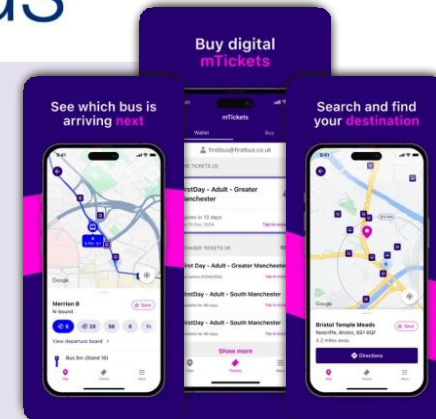


# First Bus

The Bristol Unibus U2 is a bus service that connects Bristol City Centre and Weston-super-Mare with the Langford Campus.

You can buy your ticket in advance on the First Bus App or pay via contactless.

The service currently only stops at the Airport Tavern; a short walk from the terminal.



GET IT ON  
**Google Play**

Download on the  
**App Store**



Bristol  
**uniBUS**

## Bristol Unibus U2

Monday to Friday: **07:17 - 23:31** (Hourly\*)

Saturday: **09:26 - 23:26** (Every 2hrs\*)

\*Peak Frequency

[View the U2 Timetable](#)



# WESTlink

WESTlink is a different type of bus service which operates in the vast majority of the West of England. It runs without a fixed timetable or route and can be booked through the WESTlink app or by phone.



Passengers can get on or off at existing bus stops (over 1,800), a number of “virtual stops”, as well as at a number of easy-to-reach places. If you want to travel further, you can connect to major bus and rail services.

WESTlink operates in 11 ‘core’ zones and 12 shared zones across the Bristol and North Somerset area.

Bristol Airport falls within the ‘Airport shared’ zone.

This means you can access a variety of zones covering places such as Weston-super-Mare in the west, Chew Valley in the east, and the centres of Portishead, Clevedon, Nailsea and Backwell.

## WESTlink Airport shared zone

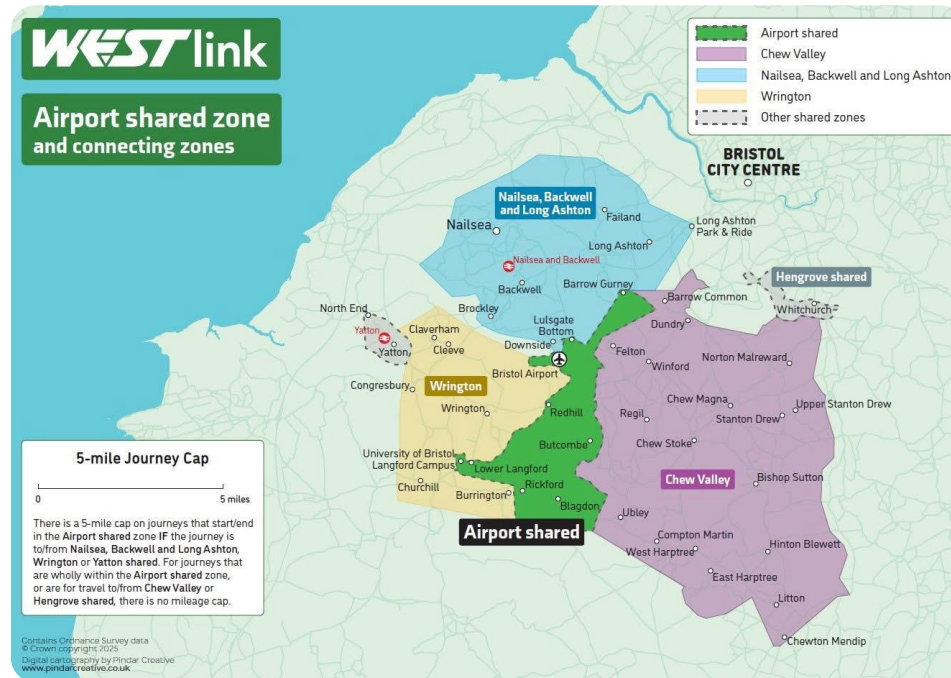
Monday to Friday: **No fixed timetable**

Services are bookable 09:00 – 14:00

Weekends & Public Holidays: **No service**

Single fares within North Somerset: **£3**

[Find out more about WESTlink](#)



# Travel By Coach

For staff, travelling longer distances to work, employees can also travel by coach to the Airport.



## 100 national express

- Birmingham
- Cheltenham
- Gloucester
- Bristol
- **Bristol Airport Bus Station**
- Weston Super Mare

[See timetable](#)

## 216 national express

- Pontcanna
- Cardiff
- Newport Kingsway
- Bristol
- **Bristol Airport Bus Station**

[See timetable](#)

## UK910 FLIXBUS

- Swansea
- Bridgend
- Cardiff
- Newport
- **Bristol Airport Bus Station**

[See timetable](#)

## Falcon

- Plymouth
- Exeter
- Cullompton
- Gloucester
- Taunton
- Bridgwater
- **Bristol Airport Bus Station**
- Bristol

[See timetable](#)



# Public Transport Interchange

Bristol Airport has invested more than £60 million to create a new public transport interchange serving our region.



The public transport interchange (PTI) has more than doubled the number of bus/coach bays to 16 bays, playing an important part in delivering the Airport's commitment to improving public transport links across the region. A new glazed link bridge directly connects to the terminal building.

Facilities available within the PTI include:

- Toilets and Water Fountains;
- Seating Area;
- M&S Food;
- Real Time Information Screens; and
- Taxi Information.



# Travel by Train

Although there are no direct rail services to Bristol Airport, there are several nearby stations that are easily accessible by direct bus services.

Bristol Temple Meads station is one of the railway stations that is serviced by a direct route to the Airport. The station features 13 platforms and provides amenities such as ticket offices, ticket machines, and accessible ticket counters. There are various shops, cafes, and waiting areas for convenience and comfort.

Other surrounding stations can then be accessed from direct routes from the serviced stations.



Rail Operating Companies

crosscountry

**GWR**  
Great Western Railway

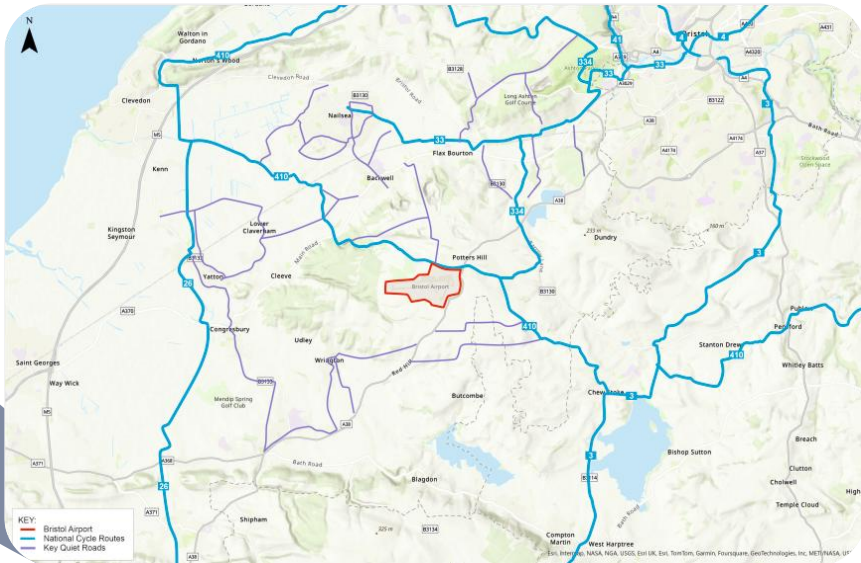
Railway Station	Bus Service	Bus Frequency (Peak)	Connecting Stations
Bristol Temple Meads	A1	Every 8 mins	Other Bristol stations (inc. Bedminster, Montpelier, Lawrence Hill, Stapleton Road, Redland, Clifton, Avonmouth and Sea Mills), and train services to Wales, the north, east and southwest.
Nailsea & Backwell	A2	Every hour	Services to Bristol Temple Meads, and into Wales, the north, east (including London Paddington), and southwest via Bridgwater and Taunton towards Exeter.
Worle	A3	Every 30 mins	Services to Nailsea & Backwell, Yatton, Weston Milton, and southwest.
Weston-super-Mare	A3	Every 30 mins	Services to Weston Milton, Highridge & Burnham, Bridgwater, and services to the southwest.
Bath	A4	Every hour	Services to Bradford on Avon, Trowbridge, Westbury, and to the east.



# Walking & Cycling

Active travel offers numerous benefits. It improves health, strengthens muscles, and boosts mental well-being through regular physical activity.

Although there is a lack of dedicated cycle lanes, there are several cycling routes appropriate for cycling around the Bristol Airport area. Please refer to the map of all cycle routes in North Somerset and Bristol identified by the Council, graded by their suitability for cycling, on the [Better by Bike website](#).



## Our Facilities



Lulsgate House  
Cycle Parking

Lulsgate House has **10 cycle parking spaces**; the shelter is located outside the main entrance into Lulsgate House, which has shower, changing and drying facilities.



Aviation House  
Cycle Parking

Aviation House has **12 cycle parking spaces**; the shelter is positioned directly outside the entrance of Aviation House, which has a shower and changing facilities.

MSCP2  
Cycle Parking



Multi-Storey Car Park 2 (MSCP2) has **20 cycle parking spaces** and a cycle maintenance stand; located at the Ground Floor entrance from the Short-stay Car Park into MSCP2. This area has convenient lift-access to the Public Transport Interchange and Terminal.

Other cycle parking is also located at the **Airport Fire Station (6 cycle spaces)** and the **Hampton by Hilton Hotel (6 cycle spaces)**.



# Car Share

**Bristol Airport has teamed up with the UK's number one car share company, Liftshare.**

Save money, meet new people and make your journey more sustainable and stress-free.

For a step-by-step How-to Guide and FAQs, refer to the Ground Transportation > Car Sharing tab within the Airport Community app.

Do you want to save money on your commute and access **priority parking** within the Staff Car Park?

**liftshare**

GET IT ON  
Google Play

Download on the  
App Store

[Bristol Airport Liftshare](#)

## **i** How does Liftshare work?

- 1** **Download the Mobilityways App**  
 Download the Mobilityways app from Google Play or the Apple Store and follow the prompts to Register for an account.
- 2** **Add Your Journey**  
 Enter your journey details in three simple steps, and we'll use our matching database to show everyone else going your way.
- 3** **Ask to Share**  
 Once you've found someone suitable, introduce yourself by contacting them. Arrange details of how and when you'll meet.
- 4** **Authenticate Your Journey**  
 Start sharing! Don't forget to Trip Authenticate at the start of your journey by scanning the Driver's QR Code.
- 5** **Priority Parking**  
 To park in a 2+ Only Bay within the Staff Car Park, print your Team's Liftshare Permit and display it clearly in your car windscreen. And don't forget to Trip Authenticate in Step 4!



# Car Parking

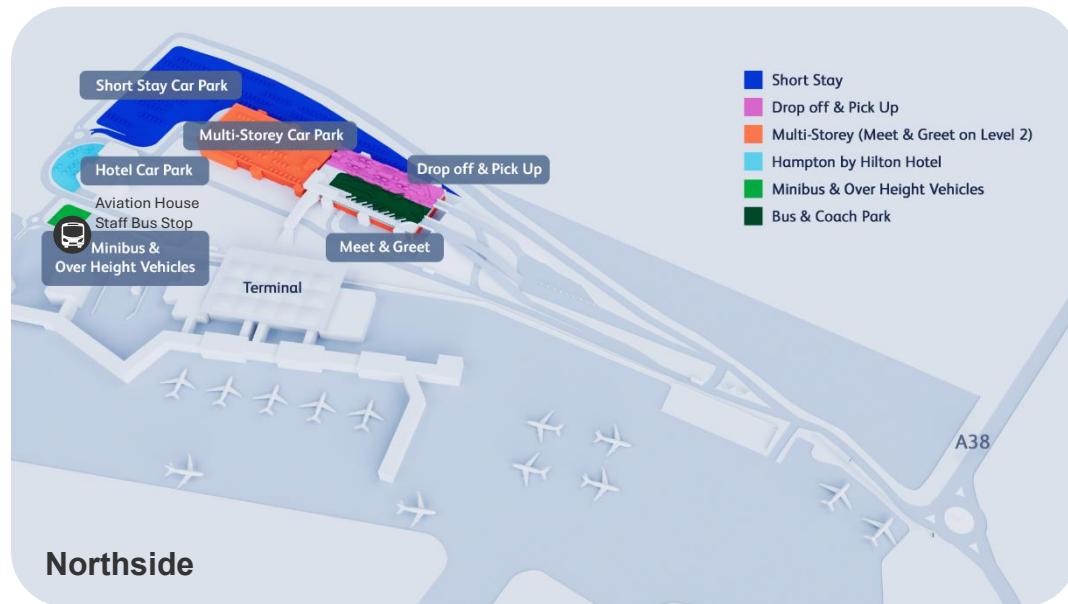
If you need to drive to Bristol Airport, you can register for access to the Staff Car Park. There are currently over 1,000 staff car parking spaces on the south side of Bristol Airport.

A dedicated Staff Bus transports staff between the Staff Transport Hub within the Staff Car Park and the Terminal / Aviation House (Northside).

The Staff Car Park has a motorcycle parking area, and marked Blue Badge and 2+ Only Bays, which are available for those with valid Permits.

Refer to [Page 13](#) for more information about Blue Badge and Temporary Circumstance permits, and to [Page 11](#) for more information about 2+ Only Bay permits, Liftshare and car sharing at Bristol Airport.

The Staff Car Park Ts & Cs can be found [here](#).



# Car Parking Permits

There are Blue Badge car parking spaces located in all Bristol Airport car parks.

There are Blue Badge spaces for staff in both the main Staff Car Park and the Lulsgate House car park on the south side of the Airport. To park in these spaces, please ensure your Blue Badge Permit is displayed clearly on your dashboard.

**Main Staff Car Park:** Located both left and right of the main entry barriers, adjacent to the Staff Transport Hub.

**Lulsgate House Car Park:** Located outside the main Entry doors.



\* Refer to [Page 11](#) and [Page 12](#) for more information about Liftshare and 2+ Only permits

## Temporary Access to Blue Badge car parking spaces

If you have a temporary need, e.g. an injury, pregnancy, or any other condition which impacts mobility, but are not eligible for an official Blue Badge, your Manager can apply for a Temporary Circumstances Car Park Permit (TCCPP) on your behalf.

To apply, your Manager should email [GTSupport@bristolairport.com](mailto:GTSupport@bristolairport.com)

TCCPPs are issued for a defined period, and once approved, the printed TCCPP can be collected from the Silver Zone Reception. Silver Zone Reception is open 24 hours a day, 7 days a week.

## Reporting Misuse of Permit Only parking spaces

To report the misuse of Blue Badge or 2+ Only permitted parking bays:

Call 0114 261 7373 and/or email [staffcarpark@bristolairport.com](mailto:staffcarpark@bristolairport.com)

Try to provide as much detail as possible to allow us to investigate, e.g. Location (e.g. Specific row or area), Date/time, Vehicle Registration and/or Photos.



# Electric Vehicle Charging Points

**Bristol Airport has a number of Electric Vehicle Charging points located across the Airport, which are available to both customers and staff.**



EV  
Chargers  
at Lulsgate  
House

## **Southside: Lulsgate House**

There are two EV Charging points in the Lulsgate House carpark on the south side of the Airport. These are currently only available to BAL staff. Search on Connect for how to pay for charging.

## **Northside: Terminal / Multi-Storey Car Park**

Ten EV Chargers, providing a total of 20 EV Charging points, have been recently installed outside the Multi-Storey Car Park, on the Terminal-side of the structure.

These chargers are available for both customers and staff.

## **Upcoming Electric Charging Infrastructure**

A new EV Charging Hub is proposed on the south side of the Airport. It will consist of ultra-rapid charging points, capable of charging a vehicle in approximately 10-15 minutes.

These chargers will be available for both customers and staff.



# Moving around On Site

**To help colleagues move around the site with ease, our dedicated Staff Bus runs approximately every 10 minutes.**

The route connects the Staff Transport Hub with the northside of Bristol Airport, offering convenient access to Aviation House and the Terminal Building. On request, the bus can also drop-off at Lulsgate House, providing flexible transport across key on-site locations.

The Staff Bus runs every 7 minutes between 03:51am – 07:28am, every 10 minutes between 07:30am – 00:00am and 02:00am – 03:50am (i.e. Departing at :00, :10, :20, etc.), and every 15 minutes between 00:15am – 02:00am (i.e. Departing at :00, :15, :30, etc.)

## Where is the Staff Transport Hub?

The Staff Transport Hub is located within the main staff car park on the south side of the airfield, which can be accessed via the Silver Zone junction on the A38.

Colleagues should exit the A38 at the roundabout and follow the internal roadway. At the mini-roundabout, turn left to access the Staff Car Park.

## Is there anywhere to sit whilst I'm waiting for the bus?

The Staff Transport Hub is open 24 hours a day for colleagues to use between bus departures. Inside the Staff Transport Hub, you'll find seating, toilet facilities and a vending machine.



# My Travel Benefits

*(BAL Employees Only\*)*

**Bristol Airport Ltd employees can take advantage of the Cycle to Work Scheme to make the commute as easy as possible.**

For shorter journeys, cycling is an excellent way to commute to work and incorporate exercise into your daily routine. Bristol Airport provides secure cycle parking facilities for employees as well as shower and changing facilities. Employees can access the Cycle Scheme to help with purchasing a new bike.



## **i** How does it work?

Cycle to Work enables you to purchase a bicycle and/or safety equipment and pay for it through your salary via Salary Sacrifice. The cost of the bicycle is collected from your salary before you pay Tax and National Insurance, saving you:

**28% OFF**

The cost of a bicycle and/or accessories if you are a basic rate taxpayer

**42% OFF**

The cost of a bicycle and/or accessories if you are a higher rate taxpayer

You can use virtually any new bicycle retailer you wish. Our Cycle to Work Scheme enables you to use Salary Sacrifice to purchase a bike (including electric) **up to a £4,500 cost**, which gives you even greater choice!

Alternatively, you can simply enter the make and model of the bicycle and/or safety equipment you require, along with details of the retailer, into the My Benefits World portal and the team will contact you to confirm your order. You can opt to only take safety equipment without a bicycle. If you are only ordering safety equipment the minimum order value is £10.

[More Information](#)

# My Travel Benefits

(BAL Employees Only\*)

If you live in Bristol, Bath or parts of South Gloucestershire, we've partnered with Dott to offer a 20% discount when renting a shared e-scooter or e-bike.

With lots of rental parking locations along the A1 and A4 Flyer bus routes, it is easier than ever to use Dott e-scooters and e-bikes to take advantage of free staff travel on Flyer buses to/from Bristol Airport.

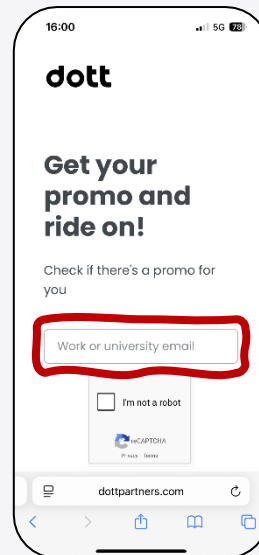
Visit the [Dott Partner's Portal](#) and enter your Bristol Airport email address to receive your unique promo code. Once received, sign-up or add the promo code to an existing Dott account (which can be a personal email address).



## How does it work?

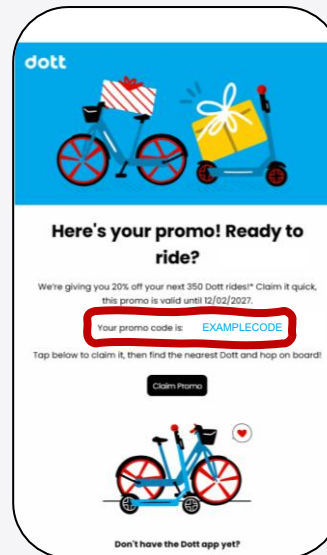
### Step 1

Enter your Bristol Airport email in the Dott Partner's Portal



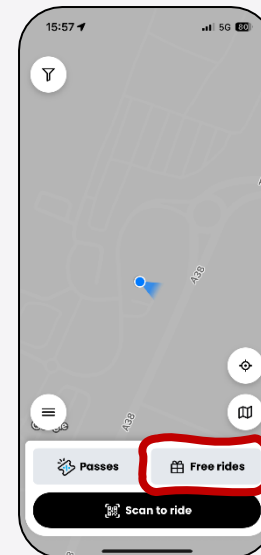
### Step 2

Receive your unique discount code by email



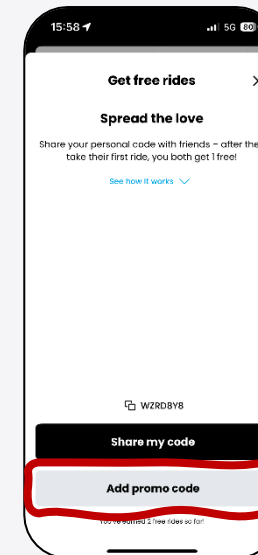
### Step 3

Select 'Free rides' on the Dott app home screen



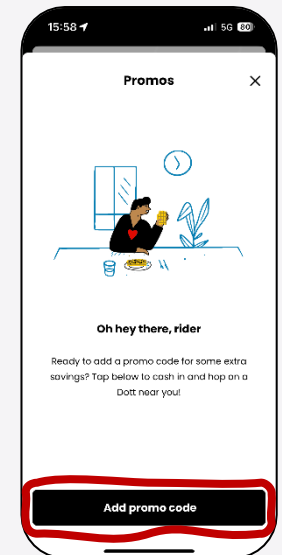
### Step 4

Select 'Add promo code'



### Step 5

Select 'Add promo code' and enter your code



\*When renting an e-scooter, a rider is bound by the same rules as if driving a car. You must follow Dott's rules when using their e-scooters and e-bikes. Privately-owned e-scooters remain illegal, except on private land, and must not to be used at Bristol Airport. [More Information](#) on the rental scheme is available on the TravelWest website.

# My Travel Benefits

*(BAL Employees Only\*)*

Bristol Airport Limited has partnered with Octopus Electric Vehicles. Sign up for our EV scheme, and if eligible, you could save up to 40% on a brand-new electric car.

How does it work? It's easy as 1, 2, 3!

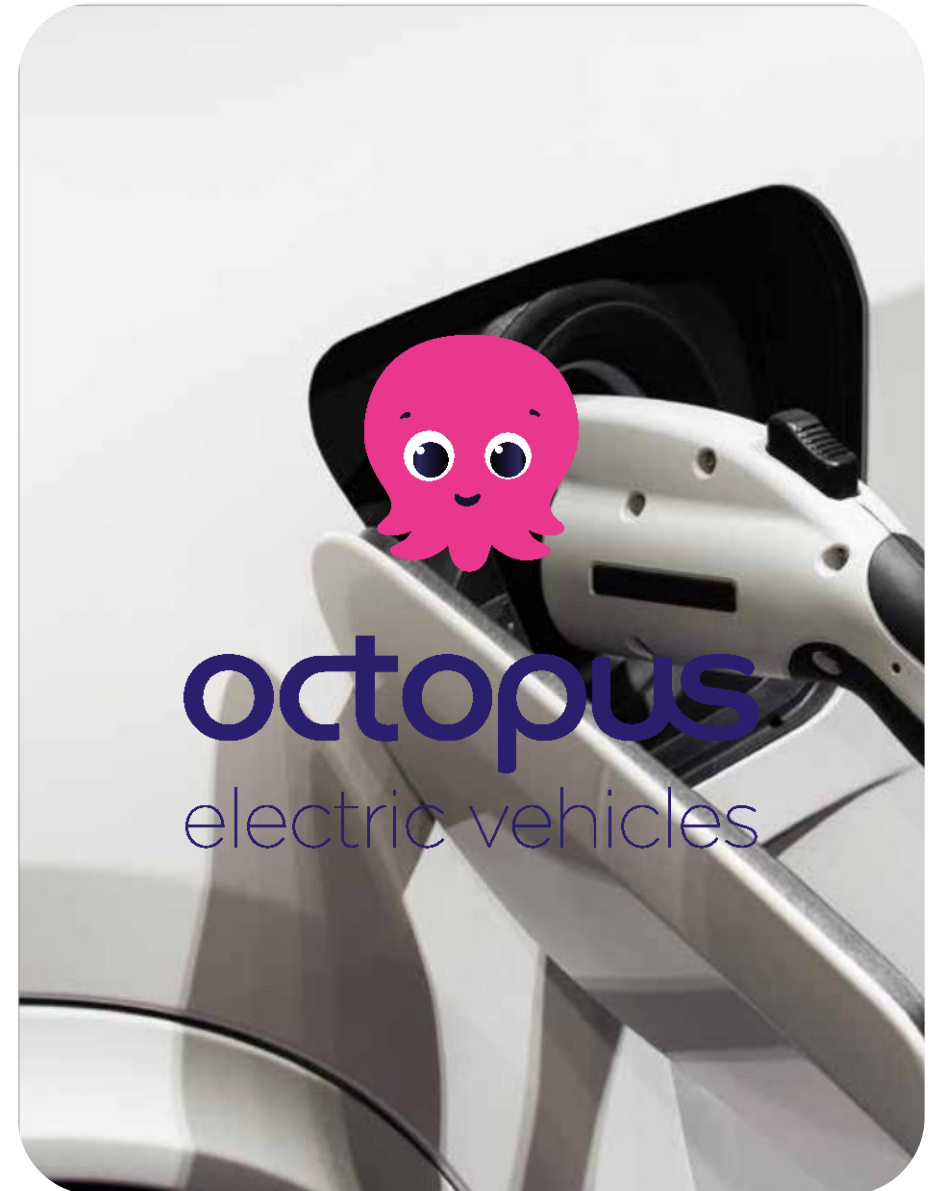


1 Like the Cycle to Work Scheme, but for electric vehicles.

2 You give up some of your gross monthly pay for a new EV.

3 You save Income Tax and National Insurance and pay a little company car tax.

Salary sacrifice is an employee benefits scheme that allows employees to pay for an electric car (EV) out of their salary.



\*If you don't work for BAL, please contact your HR representative to find out what benefits are available from your own employer.

# Other Travel Offers

**Additional travel support is available from the following local authorities:**



West of England Mayoral  
Combined Authority

[More information](#)



Bristol City Council

[More information](#)



North Somerset Council

[More information](#)



## Get in touch

If you have any questions, feedback or ideas about staff travel at Bristol Airport, please contact the surface access manager Rob Henley ([robert.henley@bristolairport.com](mailto:robert.henley@bristolairport.com))

## WEST Individual Support

TravelWEST offer the following **FREE** support so you can try cycling, walking or catching the bus to work:

**Borrow a bike for free** to try cycling before you buy. We can loan you a hybrid or folding bike for up to 1 month, or an electric bike for up to 2 weeks.

**Cycle training to improve your skills** and ability to cycle confidently. We offer 3 sessions – Beginner, intermediate and advanced.

**Accompanied ride to work** to find your best route and build your confidence.

**Help to see all your options** for getting to work.

**Bus taster tickets** to try commuting by bus\*. To get a few extra minutes of exercise, try getting off a stop earlier.

Refer to TravelWEST and the NSC/BCC websites for more details, depending on where you live:

<https://travelwest.info/for-businesses/for-staff/individual-support/>

*\*Excludes trips to/from Bristol Airport on A1, A2, A3 & A4 Buses, which are already free or discounted for BAL and Business Partner employees when on shift.*